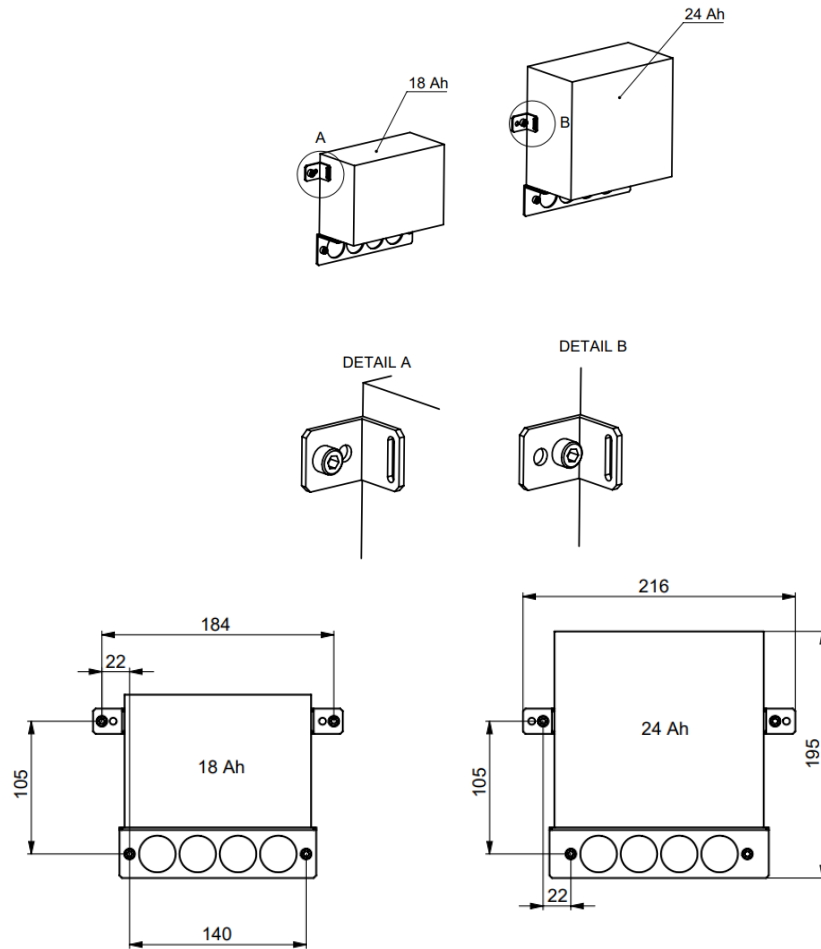




- Issued by:** ellipse aero s.r.o.  
U Hellady 697/4  
140 00 Praha 4 – Michle  
C 41710
- Responsible person:** Ing. Jan Vavřín
- Subject:** Battery holder replacement
- Classification:** **NOTIFICATION**
- Applicability:** Ellipse spirit RG up to S/N: 55/2021
- Date of issue:** 19.5.2023
- Urgency:** Optional action – not time limited
- Reason:** It is highly recommended to change the battery holder to the new design, as this reduces the risk of a short circuit and all the potential consequences that may arise. Additionally, the new battery holder is lighter than the previous design.
- Action:** In case Shorai 18Ah or 24Ah battery is used:
- Disconnect and uninstall the battery.
  - Unscrew original battery holder.
  - According the drawing and battery type install new holder.
  - Install battery using textile straps.
  - Connect battery again
- In case different battery is used:  
It is important to provide the manufacturer with its dimensions when placing the order for the new battery holder, and consult with them regarding the eligibility of the holder's installation.



**Material and Drawings:**

ESA-602-01-01 or ESA-602-01-02 depending on the battery type  
2x ESA-602-01-03  
Set of textile straps  
4x 1x Screw M5x30 DIN912  
4x Washer M5 DIN125A  
4x Self-locking Nut M5 DIN985

**Mass and Balance:**

Not affected

**Notes:**

The battery holder change should be performed only by qualified personnel or by ellipse spirit manufacturer.

**Bulletin related costs:**

The costs will be covered by aircraft owner.